


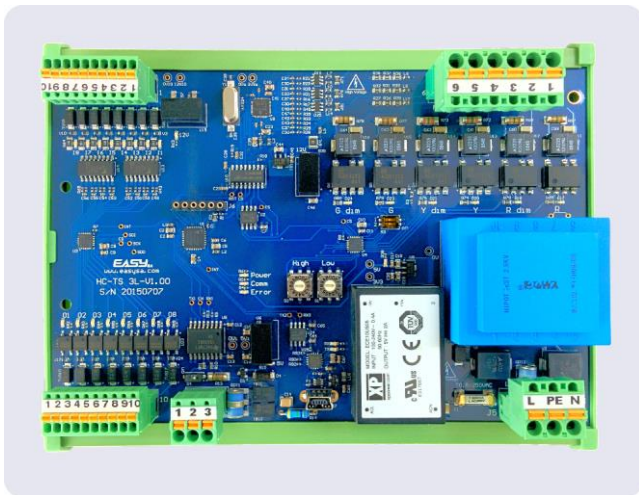


-  your idea...
-  our solutions...
-  your success...

**EASY**<sub>SA</sub>



## Interface for traffic lights LED HC-TS



The interface for traffic lights LED HC-TS, developed and manufactured by **EASYsa**, is the ideal solution for a safe and remote control of traffic lights. The proper operation of the lights is guaranteed by the continuous current and voltage measurements and the feedback of the lights status to the control system

HC-TS is equipped with a serial and a parallel interface for the communications with the control system. There is also an extra USB interface for settings and local diagnostics. In addition to the control functions the serial interface allows remote diagnostics and updates.




The high technology of HC-TS brings together the functionalities of use, safety and service in a minimum volume in order to become the ideal universal solution for the control of any type of road traffic lights.

HC-TS, the best answer for modern needs :

- Day/night mode with operating capacity of 12/4 W per canal with 230/160VAC
- Synchronization function and adjustment of flashing duration
- Additional inputs/outputs for special functions
- Guarantee of functionality by continuous monitoring of current and voltage of the 3 output lines
- High immunity against parasites with galvanic separations between electronic – output lines and between electronic – input lines
- Diagnostics and software updates by remote access

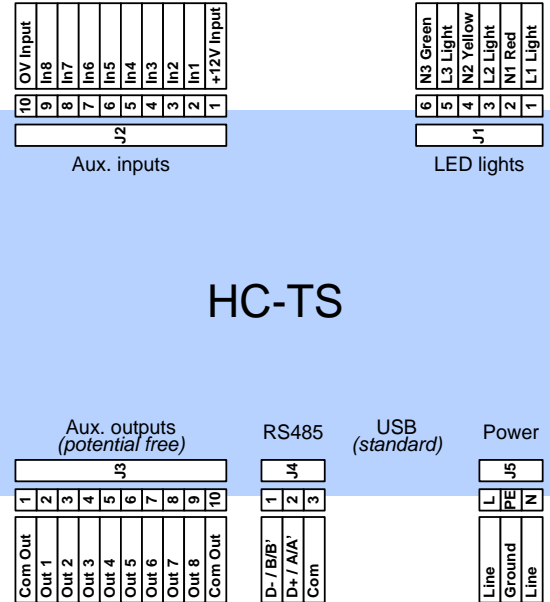
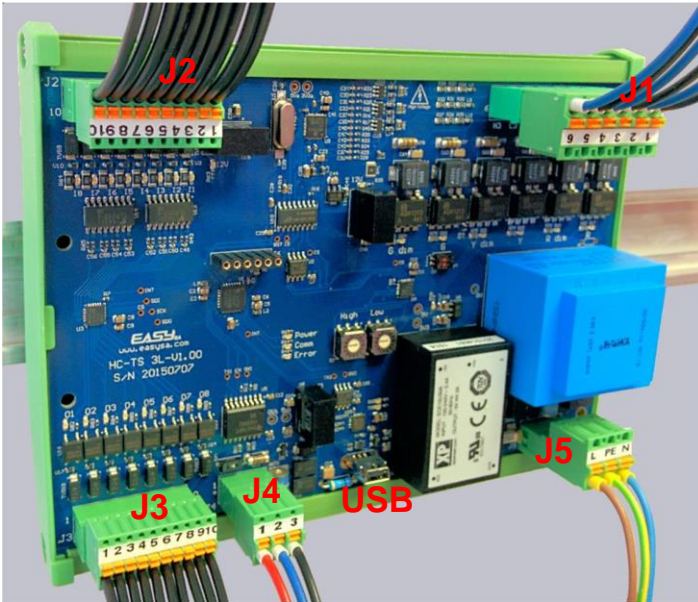
and numerous advantages ...

- **complete solution, minimal congestion**
- **mounting on DIN rails and connection by plug-in terminals**
- **2 serial interfaces and 1 parallel interface with 8 inputs and 8 outputs**
- **customizable parallel interface**
- **USB interface for configuration and local diagnostics**
- **monitoring lights on board**
- **long service life, contactless electronics and no stressed components**
- **unique model for all types of LED lights**

-  your idea...
-  our solutions...
-  your success...



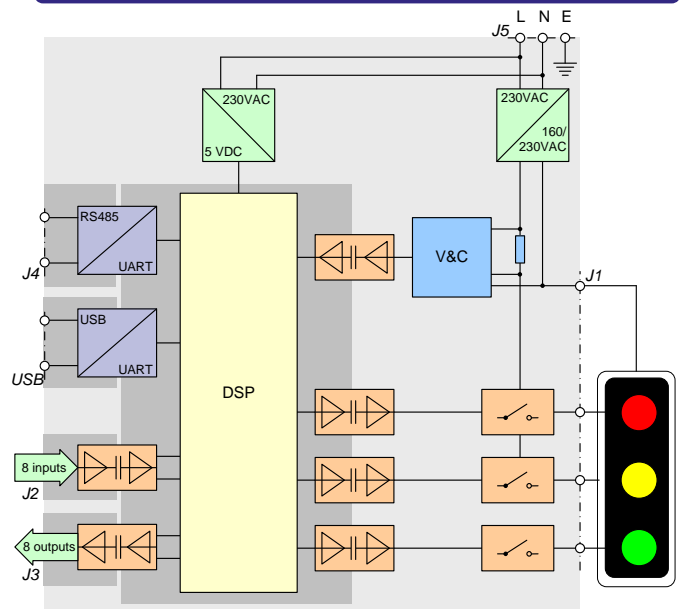
## Utilization : pattern, connections and informations



## Technical data

Output types	3 x 230/160VAC
Output power	12W per output, 4W in reduced mode
Eligible sections	J1 0.2..2.5 mm <sup>2</sup> , AWG 24-12
"	J2, J3 0.14..0.5 mm <sup>2</sup> , AWG 26-20
"	J4 0.14..1.5 mm <sup>2</sup> , AWG 26-16
"	J5 0.75..2.5 mm <sup>2</sup> , AWG 19-12
Supply voltage	230VAC, ±10%, 40-60 Hz
Power consumption	< 10 W
Serial control interface	RS485 halfduplex isolated
Protocol	Modbus RTU
Data transfer	4800..115200 bauds
Parity	without, pair, impair
Stop	1 or 2 bits
Addressing	2 rotary switches
Parallel control interface	
Inputs	8 isolated inputs 10-30V
Outputs	8 isolated outputs 10-30V, 75mA
Diagnostic interface	USB
Montage	rail DIN TH 35 or wall mounting
Dimensions	162 x 124 x 64 mm

## Pattern bloc



Do not hesitate to express your interest and needs and we gladly prepare an individual offer